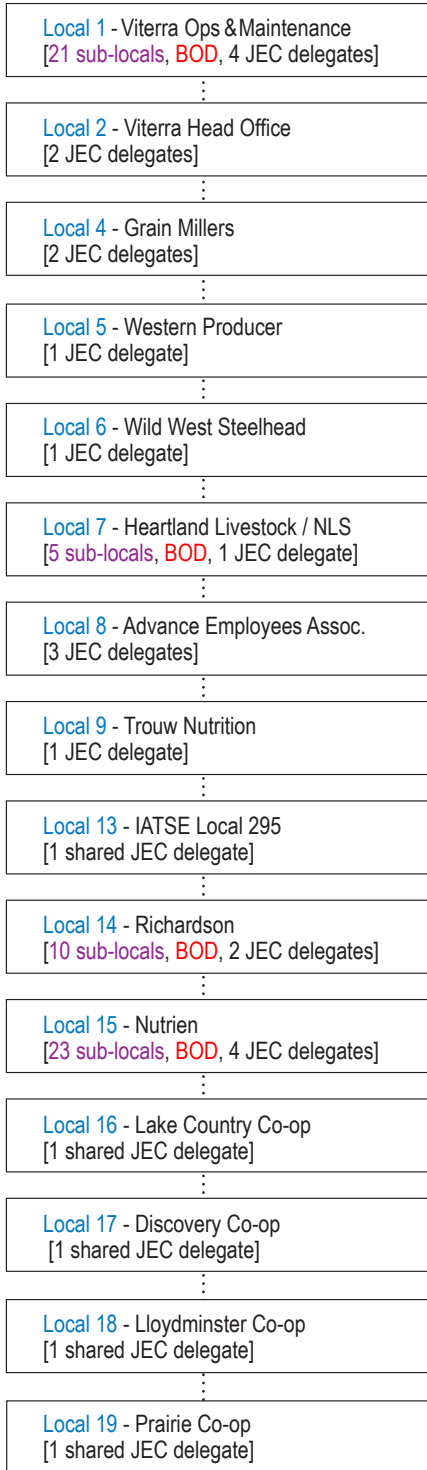


GSU Structure

[as at March 1, 2024]

GRAIN AND GENERAL SERVICES UNION MEMBERSHIP



GRAIN AND GENERAL SERVICES UNION GOVERNING BODY BETWEEN POLICY CON-

Joint Executive Council (25 elected representatives)

- GSU President [1]
[Executive Committee member]
- GSU Vice-Presidents [2]
[Executive Committee members]
- Local 1 - Viterra Ops & Maintenance
[4 JEC delegates]
- Local 2 - Viterra Head Office
[2 JEC delegates]
- Local 4 - Grain Millers
[2 JEC delegates]
- Local 5 - Western Producer
[1 JEC delegate]
- Local 6 - Wild West Steelhead
[1 JEC delegate]
- Local 7 - Heartland Livestock / NLS
[1 JEC delegate]
- Local 8 - Advance Employees Assoc.
[3 JEC delegates]
- Local 9 - Trouw Nutrition
[1 JEC delegate]
- Local 14 - Richardson
[2 JEC delegates]
- Local 15 - Nutrien
[4 JEC delegates]
- Local 13 - IATSE Local 295
Local 16 - Lake Country Co-op
Local 17 - Discovery Co-op
Local 18 - Lloydminster Co-op
Local 19 - Prairie Co-op
[1 shared delegate]